

## Technical Note

---

### LCD Drawer with Keyboard I/O FOR Central Control Unit (CCU) Antenna control Unit (ACU)

---



Document: TEC35-0148-001

Jan 2016

## 1 INTRODUCTION

### 1.1 Overview

The CCU/ACU supplied with your system doesn't include screen and keyboard. Instead ORBIT provides you with 1U LCD Keyboard Drawer model AMK 701.

### 1.2 Scope

This Technical Note provides information and procedures required install and connect the LCD Keyboard Drawer to the CCU/ACU



Figure 1 LCD Keyboard Drawer

### 1.3 Effective Releases

This document is effective for TVRO AND TX RX and Vsat systems Maritime Satellite Communication System.

AL-7204

AL-7205

AL-7207

AL-7208

AL-7209

AL-7108

AL-7109

AL-7107 (Orband )

OceanTrx



This information is important and should be noted.






Information given in this message warns of a hazard.



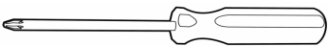


Information given in this warning refers to the only safe method of installation or operation and must be adhered to.

---

## 2 KIT INCLUDE

Quantity	Description	Figure
1	LCD Keyboard drawer	
1	Power cable	
1	VGA D-sub 15 pin to VGA D-sub 15 pin and USB or PS2 connector	

## 3 REQUIRED TOOLS

Tool/Part Name	Figure
Flat screwdriver	
Tie cutter	
Tie wraps	

## 4 INSTALLING THE LCD DRAWER

Locate available 1U slot in the 19' rack



If you installing the LCD Keyboard Drawer on CCU with existing keyboard drawer refer to appendix A for keyboard drawer removal

Install the LCD Keyboard Drawer in the 17' rack

Use shortest possible distance between the CCU and LCD drawer



Figure 2 Rack installation

Connect the LCD Keyboard Drawer to the CCU

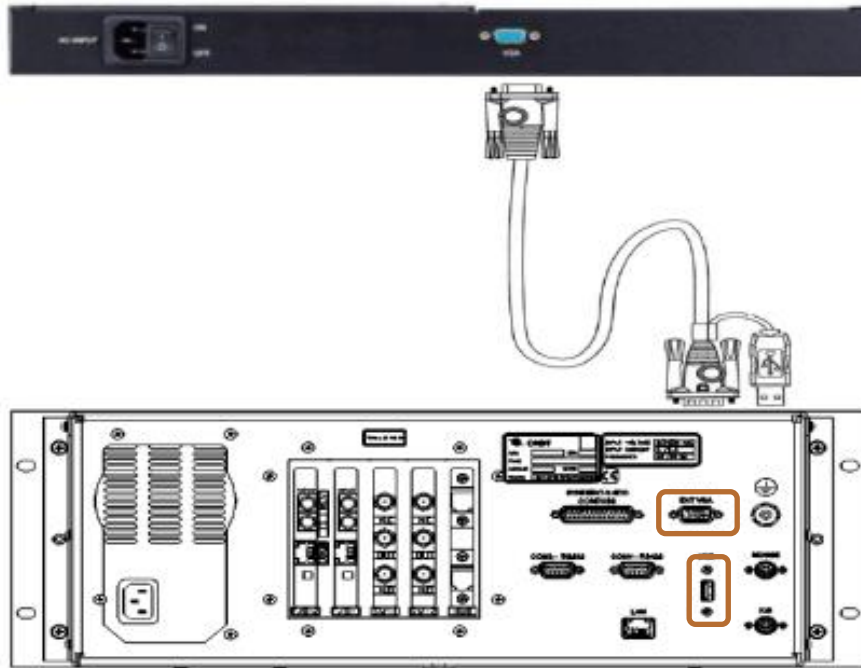


Figure 3 CCU –LCD drawer connection



Figure 4 VGA (KVM) cable

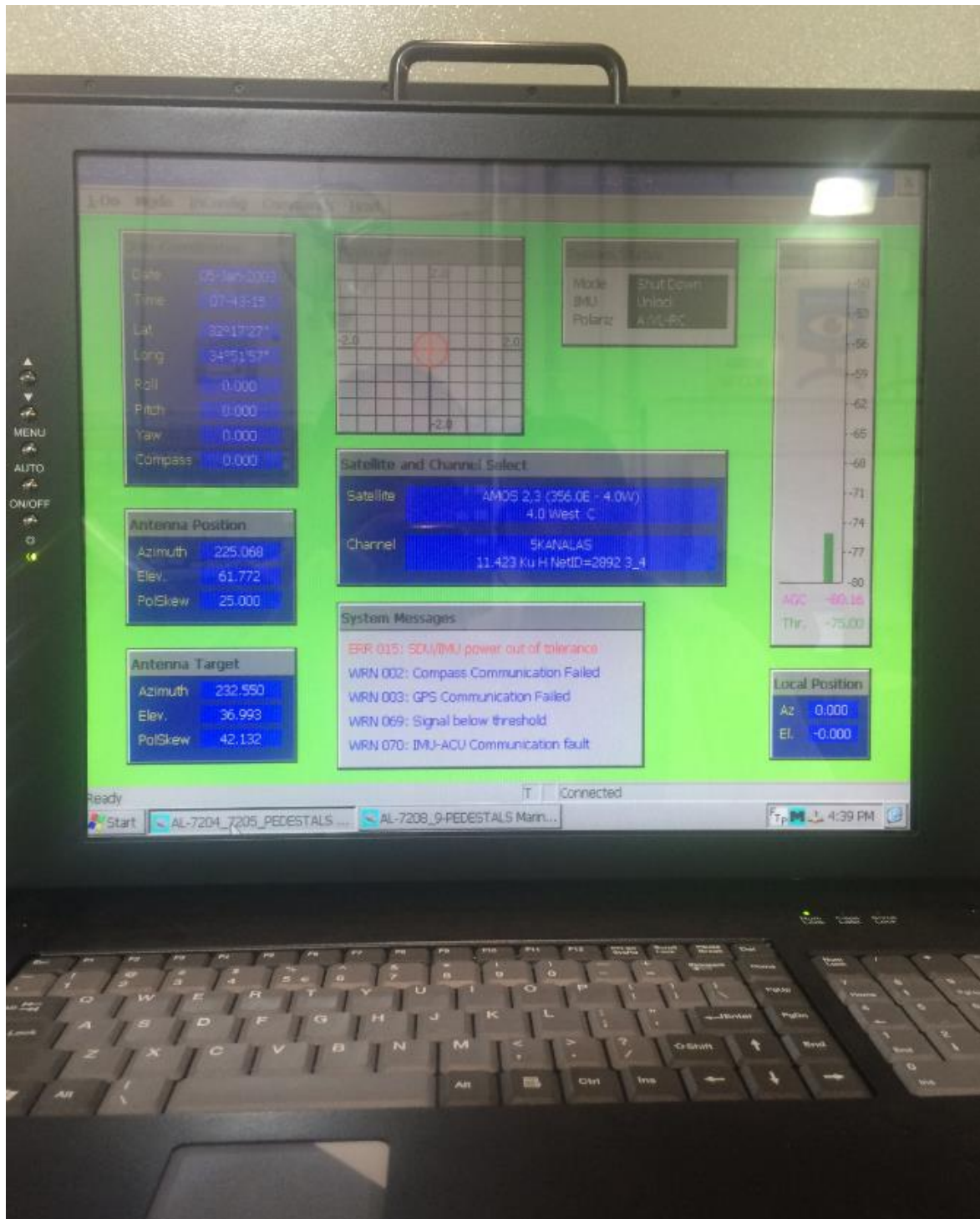
Connect the LCD drawer power cord and connect to available socket in the rack



Figure 5 Power and VGA cables

## 5 POWER ON

- Power on LCD drawer. (power switch is located on the back side)
- Power on the CCU
- Verify screen power LED is green.
- Check if the image is showing and not distorted
- Verify the keyboard and touch pad are responding
- Press AUTO to optimize the display



## Appendix A

In case the existing keyboard has to be removed follow the steps below:

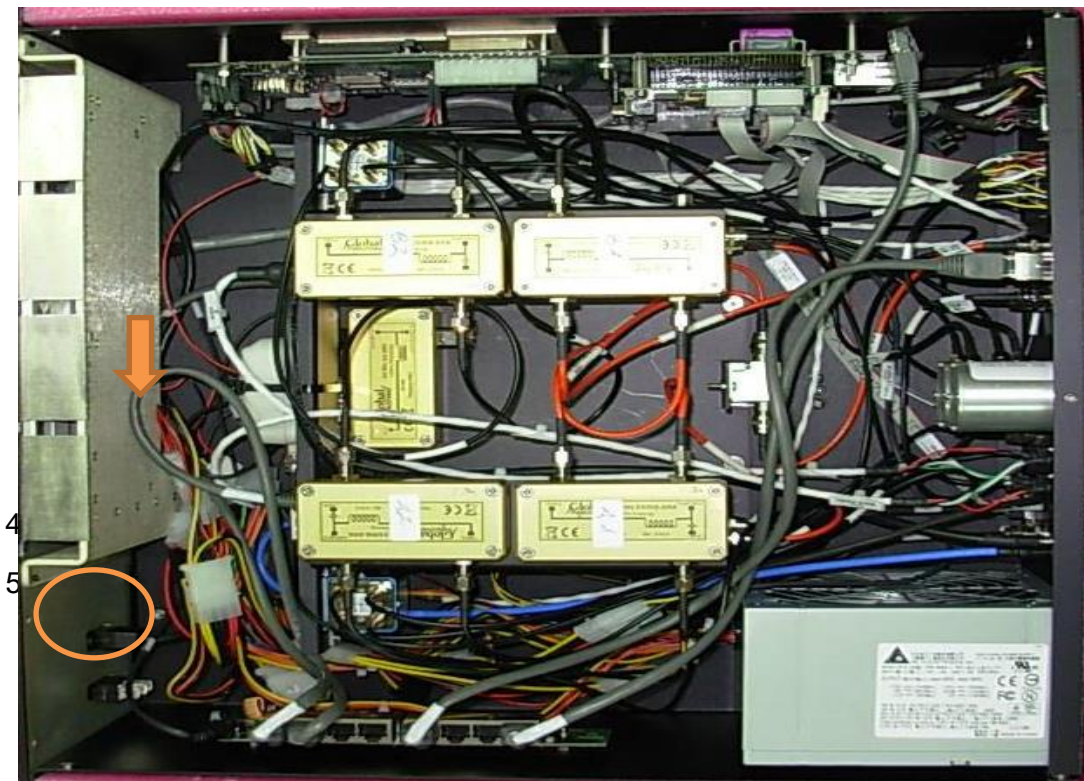
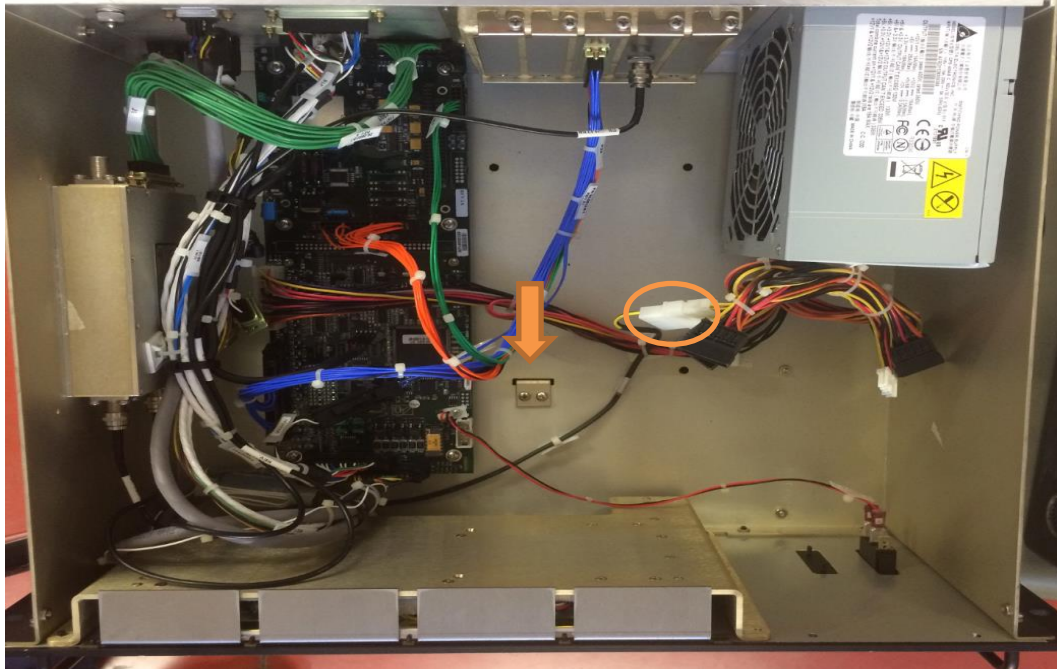
1. Remove the CCU from the rack. Open the top cover
2. Remove the 2 Philips screws securing the lock plate of the KB drawer





Keep the screws need them for the assembly of ACU/CCU

3. Disconnect 4P connector (IDE power style) providing power to the internal LCD





- 5.1 Rotate Back the ACU/CCU
- 5.2 Remove the bolts holding the rails.
- 5.3 Remove the drawer and the rails
- 5.4 Check that No screw was left inside the ACU/CCU.
- 5.5 Close the Top Cover.
- 5.6 Install back the ACU/CCU to the rack.
- 5.7 Install the 1U SCREEN & to the rack.
- 5.8 Connect the LCD Keyboard Drawer to the CCU according sections 1.1 to 3.