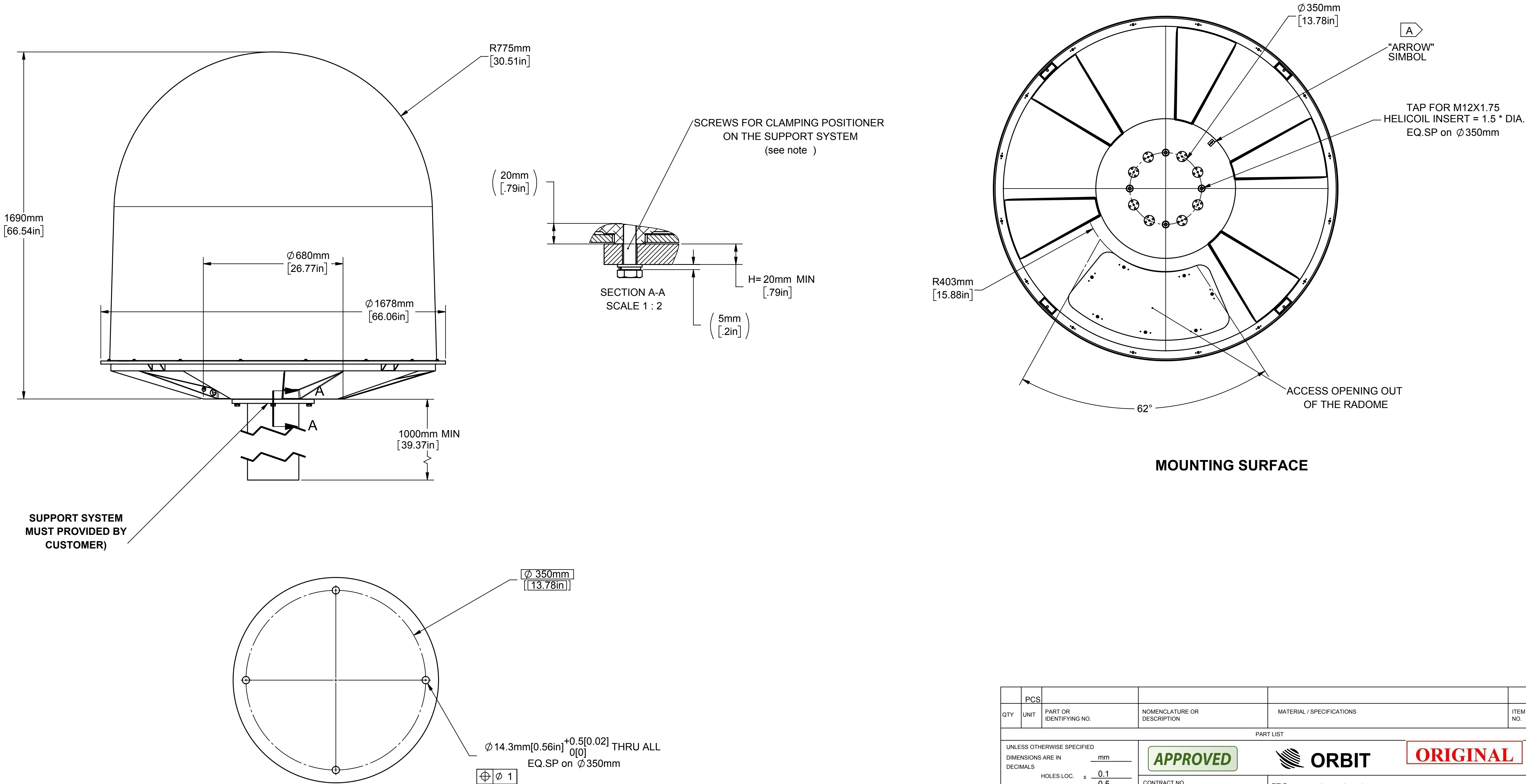


NOTES:  
1. CUSTOMER SUPPORT'S FLOOR WILL BE LOCATED AT MINIMUM DISTANCE OF 1M FROM THE SHIP FLOOR.  
2. SIDE CLAMPING-4 MOUNTING HOLES, Ø 14.3mm PERFORMED IN THE EXTERNAL SUPPORT ARE ALLOWING EXTERNAL BOLTING FROM ABOVE BY MEANS OF M12x1.75 SCREWS AND MATCHING WASHERS.  
THE SCREWS LENGTH (L) SHOULD SATISFY THE FOLLOWING CONDITION: L=H+5+15mm AND MAY VARY IN THE RANGE OF: ±2mm.  
3. SCREWS MATERIAL IS STAINLESS STEEL ASE CLASS 70 IN A2-70.  
4. ASSEMBLE TORQUE 75NM/55LbxFt/660LbxInch.  
5. WEIGHT OF SYSTEM -200Kg.


REVISIONS				
ZONE	REV.	DESCRIPTION	DATE	APPROVED
	-	NEW RELEASE	08.02.13	
	A	ECO NO EC1700058	08.06.17	Alex V.

OceanTRx4  
1.2m Tx/Rx Ku-BAND STABILIZED ANTENNA SYSTEM  
SYSTEM'S OUTLINE DIMENSIONS



PROPRIETARY DATA  
Information contained herein is the sole property of ORBIT Communication Ltd. and is not for publication, duplication and it may not be passed to any other party without written authorization from ORBIT Communication Ltd.

THE RECOMMENDED CUT OUT FOR HOLES ON THE CUSTOMER'S MAST

PCS							
QTY	UNIT	PART OR IDENTIFYING NO.	NOMENCLATURE OR DESCRIPTION		MATERIAL / SPECIFICATIONS		ITEM NO.
PART LIST							
UNLESS OTHERWISE SPECIFIED DIMENSIONS ARE IN DECIMALS		mm		<div>APPROVED</div> <div> ORBIT</div> <div>ORIGINAL</div>			
HOLES LOC. ± 0.1 LIN. DIM. ± 0.5 ANGULAR ± 0.5		CONTRACT NO.		TITLE DCD FOR OceanTRx4-500			
DO NOT SCALE DRAWING		DRAWN	Vladimir G	08.02.13	SUB. ASSEMBLY -		
CHAMFER EDGES 0.5 x 45°		CHECK			ASSEMBLY -		
FINISH [m in] 125/		DESIGN	VladimirG	08.02.13	SIZE D	FSCM NO. S5496 OTRx4	DWG. NO. DCD31-1249
		WEIGHT	SIGN.	DATE	SCALE 1:10 RELEASE DATE		Sheet1 OF 1