

4

3

2

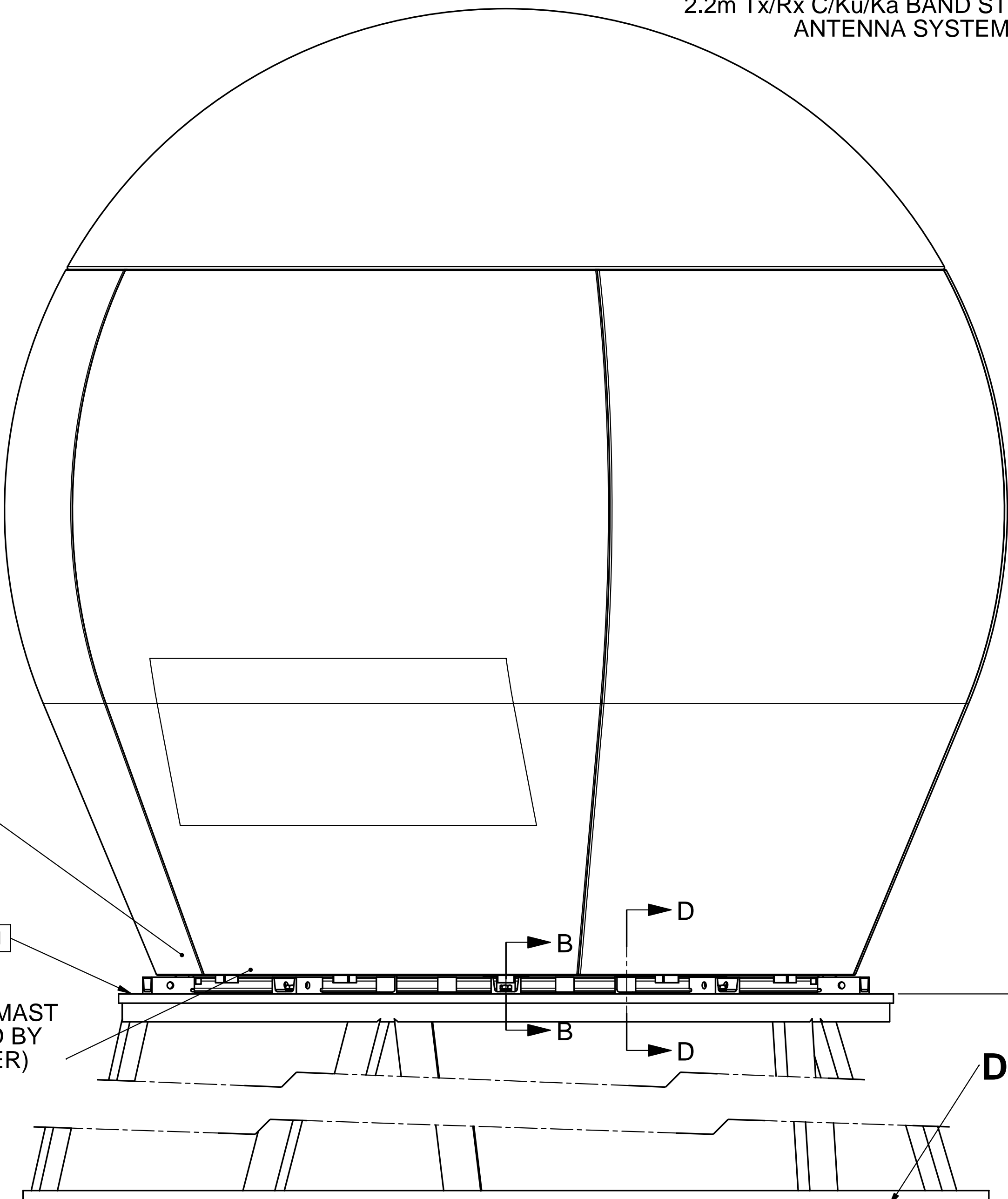
1

OceanTRx™7 SERIES MECHANICAL INTERFACE CONTROL DRAWING  
 2.2m Tx/Rx C/Ku/Ka BAND STABILIZED  
 ANTENNA SYSTEM

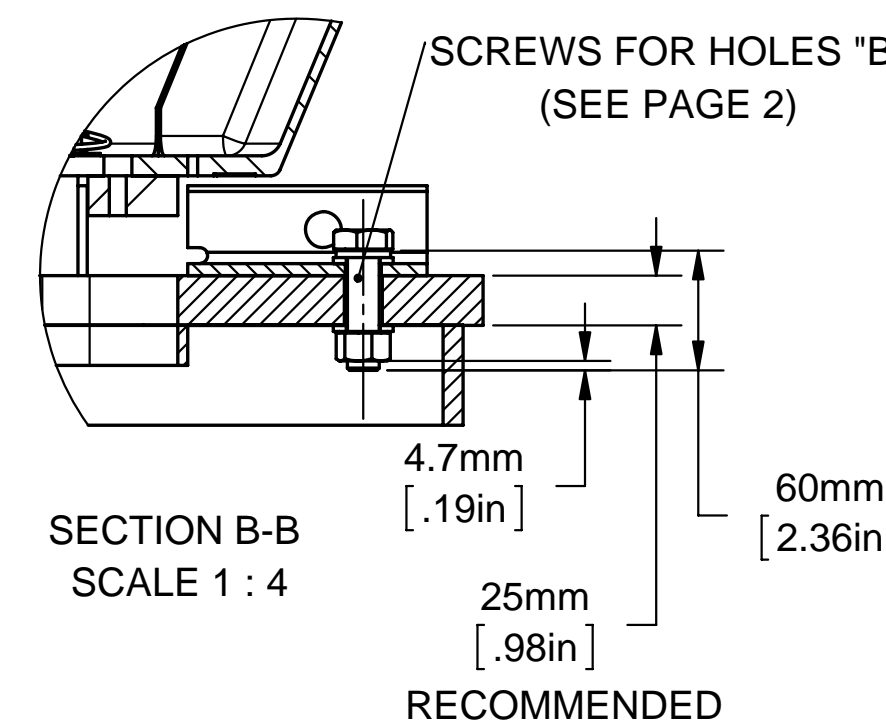
| REVISIONS |      |             |          |          |
|-----------|------|-------------|----------|----------|
| ZONE      | REV. | DESCRIPTION | DATE     | APPROVED |
|           | -    | NEW RELEASE | 29.04.13 |          |

NOTES:

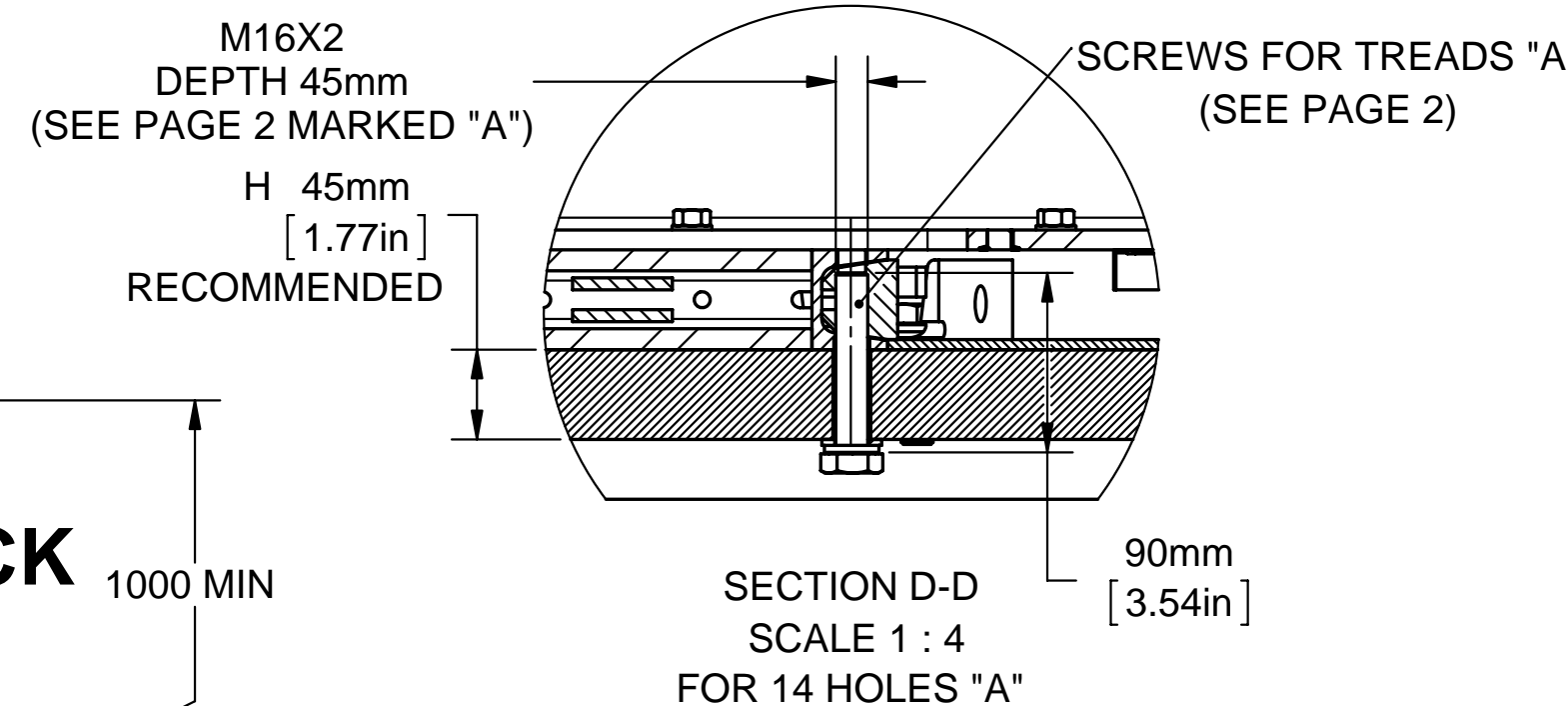
- CUSTOMER MAST SHOULD FIT TO THE SYSTEM BASE RING HOLES  $\varnothing 18$  "B" AND TREADS M16x2 "A", ADEQUATE BOTTOM HATCH AND AIR CONDITION OPENINGS. SEE DIMENSIONS IN SHEET 2.
- CUSTOMER MAST HEIGHT SHOULD BE AT LEAST 1M FROM THE SHIP FLOOR, IN ORDER TO ALLOW ACCESS TO THE SYSTEM MOUNTING FROM BELOW AND PERSONAL ENTRANCE THROUGH THE BOTTOM HATCH.
- REQUIRED FLATNESS OF THE MOUNTING SURFACE OF THE TOP PLATE OF THE MAST SHOULD BE LESS THAN 1 mm.



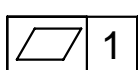
BASE RING'S 10 SIDE MOUNTING HOLES



SYSTEM BASE RING'S 14 CENTRAL MOUNTING THREADS



BASE RING



CUSTOMER MAST (PROVIDED BY CUSTOMER)

DECK

1000 MIN

PROPRIETARY DATA  
 Information contained herein is the sole property of ORBIT Communication Ltd. and is not for publication, duplication and it may not be passed to any other party without written authorization from ORBIT Communication Ltd.

APPROVED

RoHS Compliant

|   |   |   |   |          |                      |
|---|---|---|---|----------|----------------------|
| - | - | - | - | REVISION | REV STATUS OF SHEETS |
| 4 | 3 | 2 | 1 | SHEET    |                      |

| PART LIST   |           |              |                              |                      |                |
|---|-----------|--------------|------------------------------|----------------------|----------------|
| UNLESS OTHERWISE SPECIFIED DIMENSIONS ARE IN <u>mm</u> DECIMALS |           |              |                              |                      |                |
| Holes Loc.  | ± 0.1     | CONTRACT NO. | TITLE Ocean TRx™7 SYSTEM ICD |                      |                |
| Lin. Dim.   | ± 0.5     |              | DRAWN Ervin                  | 29.04.13             |                |
| Angular   | ± 0.5°    |              | CHECK <i>Arvi G.</i>         |                      |                |
| DO NOT SCALE DRAWING  |           |              | SUB. ASSEMBLY -              |                      |                |
| CHAMFER EDGES   | 0.5 x 45° | DESIGN ERVIN |                              | ASSEMBLY Ocean TRx™7 |                |
| FINISH  | 125/√     | DATE         | 29.04.13                     | SIZE C               | FSCM NO. S5496 |
|   |           |              | WEIGHT -                     | SIGN.                | DATE           |
|   |           |              | SCALE 1:10                   |                      | RELEASE DATE   |
|   |           |              |                              | Sheet1               | OF 4           |

4

3

2

1

4

3

2

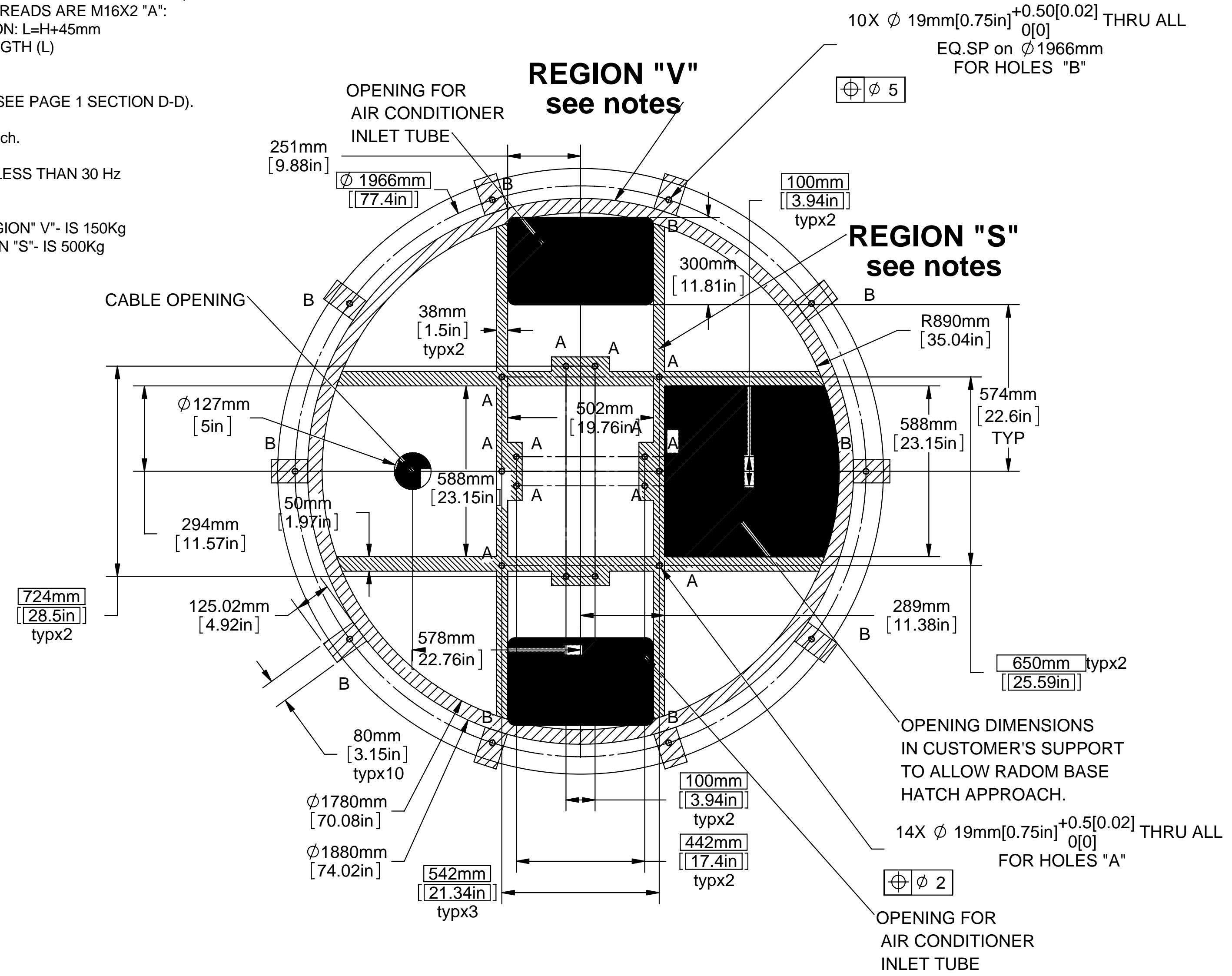
1

NOTES:

1. SYSTEM BASE RING'S 10 SIDE MOUNTING HOLES (18mm DIA "B" )  
ALLOW THE MOUNTING OF THE SYSTEM FROM ABOVE (SEE SECTION B-B PAGE1),  
BY USING EXTERNAL BOLTS AND MATCHING WASHERS.  
TRUE POSITION FOR LOCATION OF THESE HOLES ARE  $\phi 1\text{mm}$ .
2. SYSTEM BASE RING'S 14 CENTRAL MOUNTING THREADS (M16X2 "A" )  
ALLOW THE MOUNTING OF THE SYSTEM FROM BELOW (SEE SECTION D-D PAGE1),  
BY USING CENTRAL BOLTS AND MATCHING WASHERS.  
TRUE POSITION FOR LOCATION OF THESE HOLES ARE  $\phi 1\text{mm}$ .
3. THERE ARE TWO DIFFERENT M16 SCREWS LENGTH (SUPPLIED WITH SYSTEM KIT INSTALLATION):  
3.1 FOR "SYSTEM BASE RING'S 10 SIDE MOUNTING HOLES" THE THRU HOLES ARE 18mm DIA "B":  
3.1.1 THE 10 SCREWS WHICH ARE SUPPLIED BY ORBIT (M16X60mm)  
SUPPORT CUSTOMER MAST TOP PLATE WITH THICKNESS OF 25 mm. (SEE PAGE 1 SECTION B-B).  
3.2 FOR "SYSTEM BASE RING'S 14 CENTRAL MOUNTING THREADS" THE THREADS ARE M16X2 "A":  
3.2.1 THE SCREWS LENGTH (L) SHOULD SATISFY THE FOLLOWING CONDITION:  $L=H+45\text{mm}$   
WHERE "H" IS CUSTOMER MAST TOP PLATE WIDTH. THE SCREWS LENGTH (L)  
MAY VARY IN THE RANGE OF:  $\pm 4\text{mm}$ .  
3.2.2 THE 14 SCREWS WHICH ARE SUPPLIED BY ORBIT (M16X90mm)  
SUPPORT CUSTOMER MAST TOP PLATE WITH THICKNESS OF 45 mm. (SEE PAGE 1 SECTION D-D).  
3.3 SCREWS MATERIAL SHOULD BE STAINLESS STEEL GRADE A2.  
3.4 RECOMMENDED TIGHTENING TORQUE IS: 88 Lbx Ft /120 NxM /1056 Lbx Inch.
4. THE CUSTOMER MAST SHALL HAVE A NATURAL FREQUENCY OF NOT LESS THAN 30 Hz
5. WEIGHT DISTRIBUTION:  
5.1 IN THE EXTERNAL PART OF THE SYSTEM BASE RING MARKED AS - REGION "V"- IS 150Kg  
5.2 IN THE CENTER PART OF THE SYSTEM BASE RING MARKED AS -REGION "S"- IS 500Kg
6. THE MARKED BLACK AREAS SHOULD BE LEAVED FREE, FOR  
AIR CONDITIONER INLET TUBES (IF USED) AND FOR  
EASE ACCESS TO THE BOTTOM HATCH AND IT'S LATCHES.

| REVISIONS |      |             |          |          |
|-----------|------|-------------|----------|----------|
| ZONE      | REV. | DESCRIPTION | DATE     | APPROVED |
| -         | -    | NEW RELEASE | 29.04.13 |          |

**CUSTOMER TOP PLATE WITH THE  
BASE RING FOOT PLATE  
THE RECOMMENDED CUT OUT  
FOR HOLES ON THE TOP PLATE OF THE MAST**



D

D

C

C

B

B

A

A

**PROPRIETARY DATA**  
Information contained herein is the sole property of ORBIT Communication Systems Ltd. and is not for publication, duplication and it may not be passed to any other party without written authorization from ORBIT Communication Systems Ltd.

|             |          |                               |                |                       |
|-------------|----------|-------------------------------|----------------|-----------------------|
|             |          | TITLE Ocean TRx™ 7 SYSTEM ICD |                |                       |
| DRAWN ERVIN | 29.04.13 | C                             | FSCM NO. S5496 | DWG. NO. DCD29-0935-2 |
| CHECK       |          | SCALE 1:10                    | RELEASE DATE   | Sheet2 OF 4           |

4

3

2

1

SHEET  
REV.  
TITLE: DWG.No.  
AL-

4

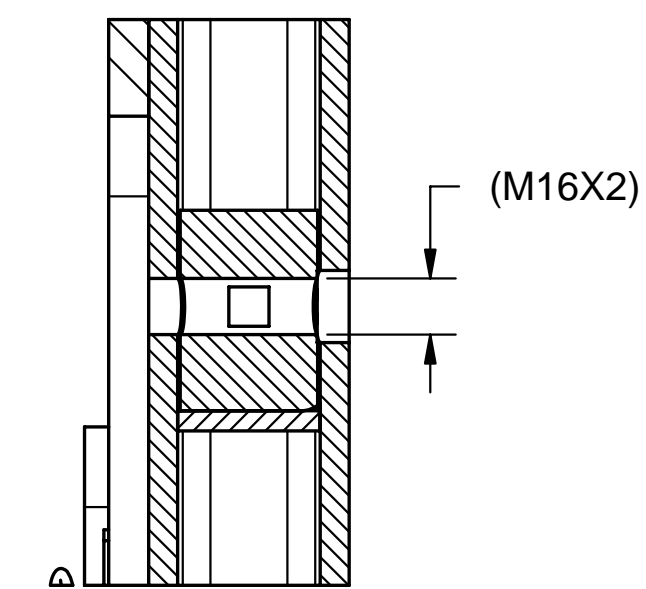
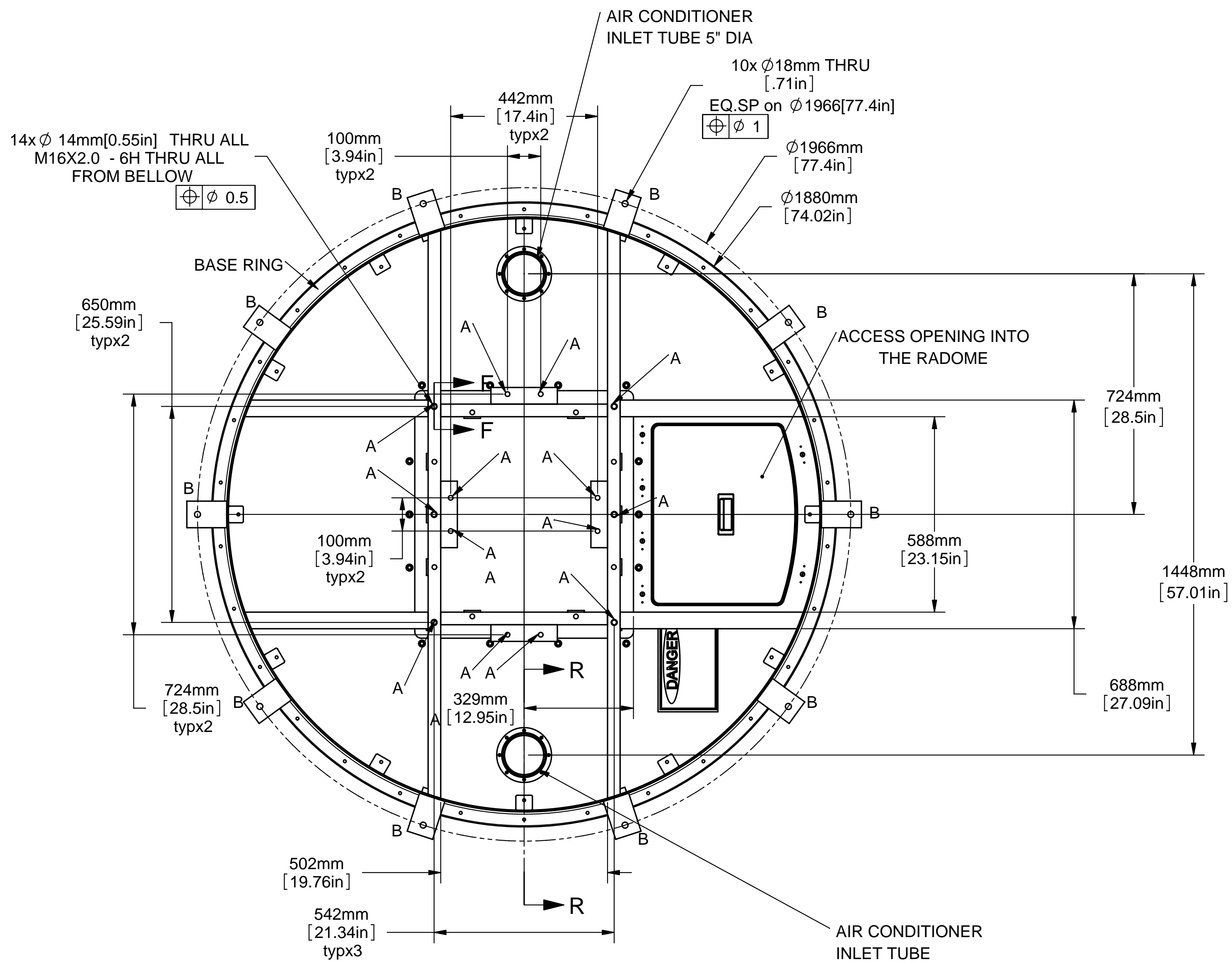
3

2

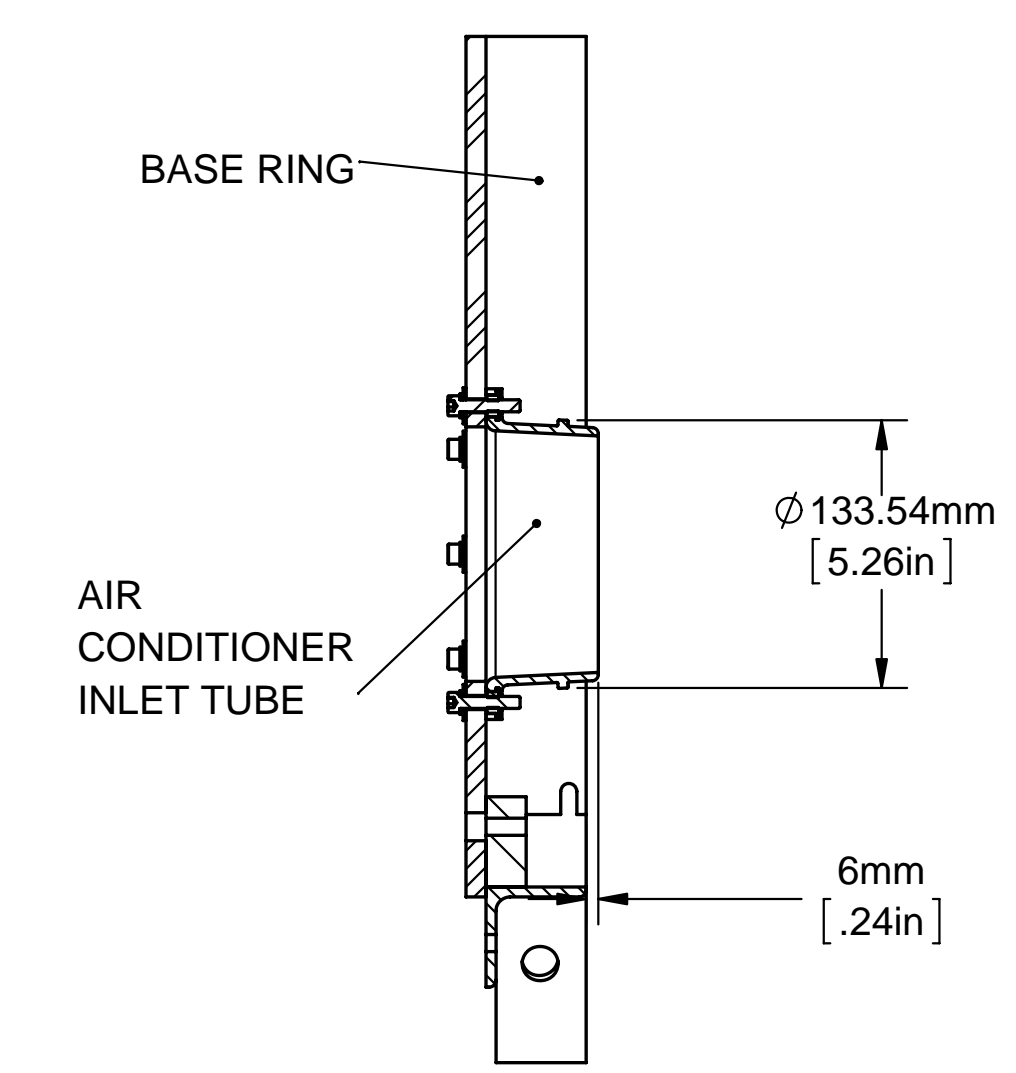
1

| REVISIONS |      |             |          |          |
|-----------|------|-------------|----------|----------|
| ZONE      | REV. | DESCRIPTION | DATE     | APPROVED |
| -         | -    | NEW RELEASE | 29.04.13 |          |

### SYSTEM BASE RING (BOTTOM VIEW)



SECTION F-F  
SCALE 1 : 2



SECTION R-R  
SCALE 1 : 4

**PROPRIETARY DATA**  
Information contained herein is the sole property of ORBIT Communication Systems Ltd. and is not for publication, duplication and it may and it may not be passed to any other party without written authorization from ORBIT Communication Systems Ltd.

|             |          |                               |                |                    |      |
|-------------|----------|-------------------------------|----------------|--------------------|------|
|             |          | TITLE Ocean TRx™ 7 SYSTEM ICD |                |                    |      |
| DRAWN ERVIN | 29.04.13 | C                             | FSCM NO. S5496 | DWG. NO. 29-0935-2 |      |
| CHECK       |          | SCALE 1:10                    | RELEASE DATE   | Sheet3             | OF 4 |

4

3

2

1

| REVISIONS |      |             |          |          |
|-----------|------|-------------|----------|----------|
| ZONE      | REV. | DESCRIPTION | DATE     | APPROVED |
| -         | -    | NEW RELEASE | 29.04.13 |          |

D  
C  
B  
A

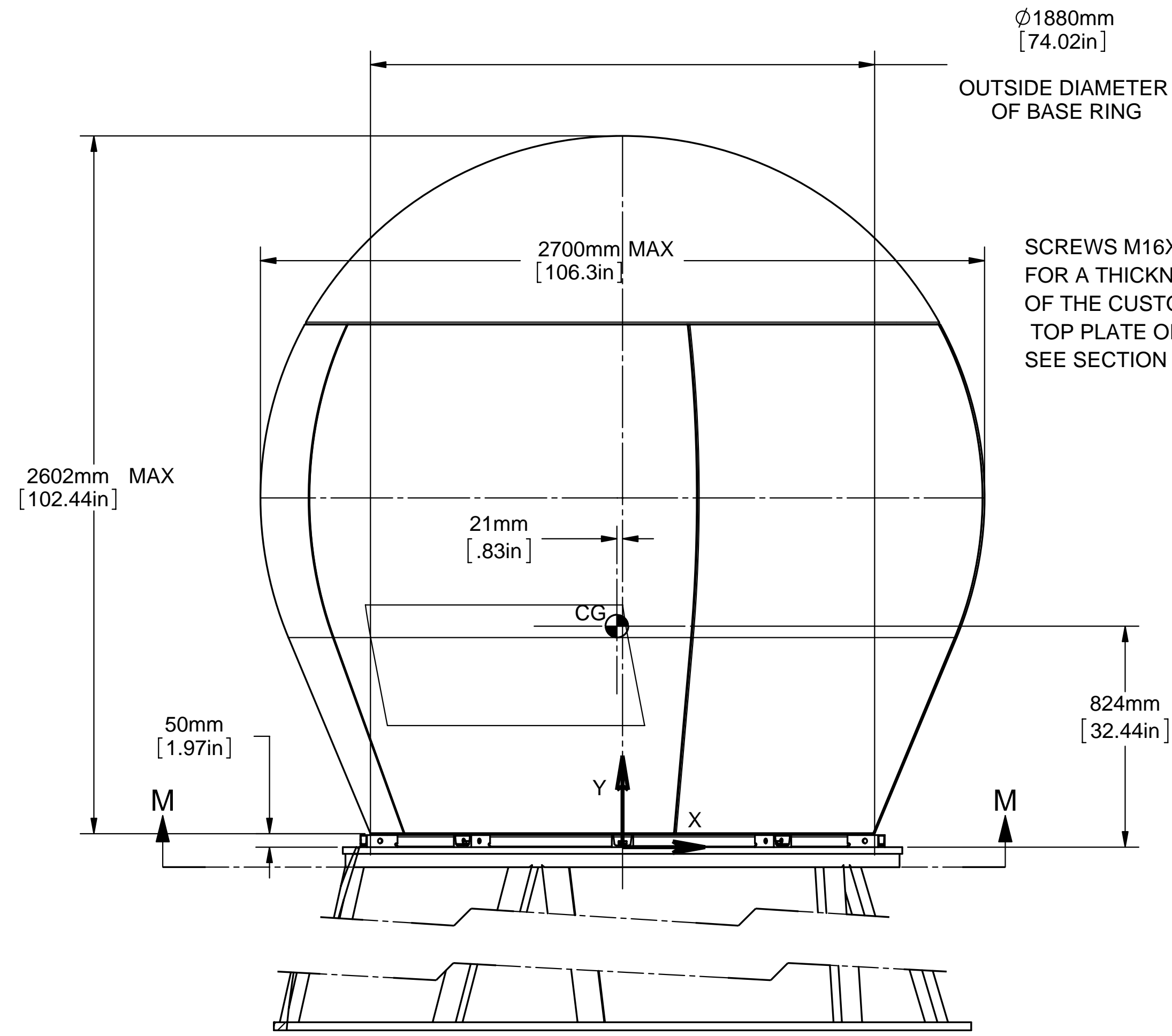
D  
C  
B  
A

4

3

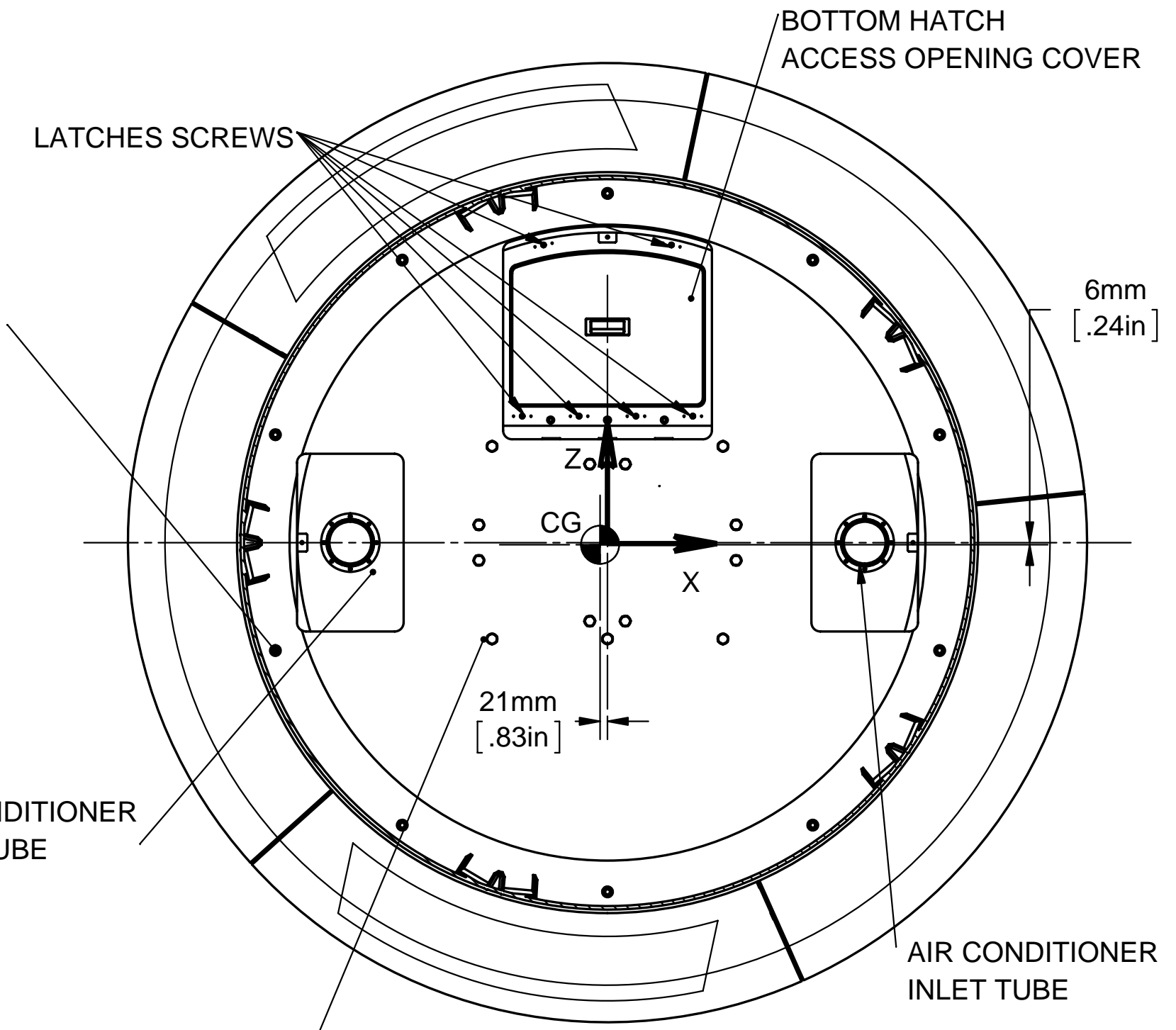
2

1



SCREWS M16X2-60mm  
FOR A THICKNESS  
OF THE CUSTOMER MAST  
TOP PLATE OF 25 mm  
SEE SECTION B-B FROM PAGE 1

SCREWS M16X2-90mm  
FOR A THICKNESS OF THE  
CUSTOMER MAST TOP PLATE  
OF 45 mm SEE SECTION D-D  
FROM PAGE 1



SECTION M-M  
SCALE 1 : 16

**PROPRIETARY DATA**  
 Information contained herein is the sole property of ORBIT Communication Systems Ltd. and is not for publication, duplication and it may not be passed to any other party without written authorization from ORBIT Communication Systems Ltd.

|             |          |                               |                |                       |
|-------------|----------|-------------------------------|----------------|-----------------------|
|             |          | TITLE Ocean TRx™ 7 SYSTEM ICD |                |                       |
| DRAWN ERVIN | 29.04.13 | C                             | FSCM NO. S5496 | DWG. NO. DCD29-0935-2 |
| CHECK       |          | SCALE 1:10                    | RELEASE DATE   | Sheet4 OF 4           |

4

3

2

1

SHEET  
REV.  
AL-  
DWG.No.