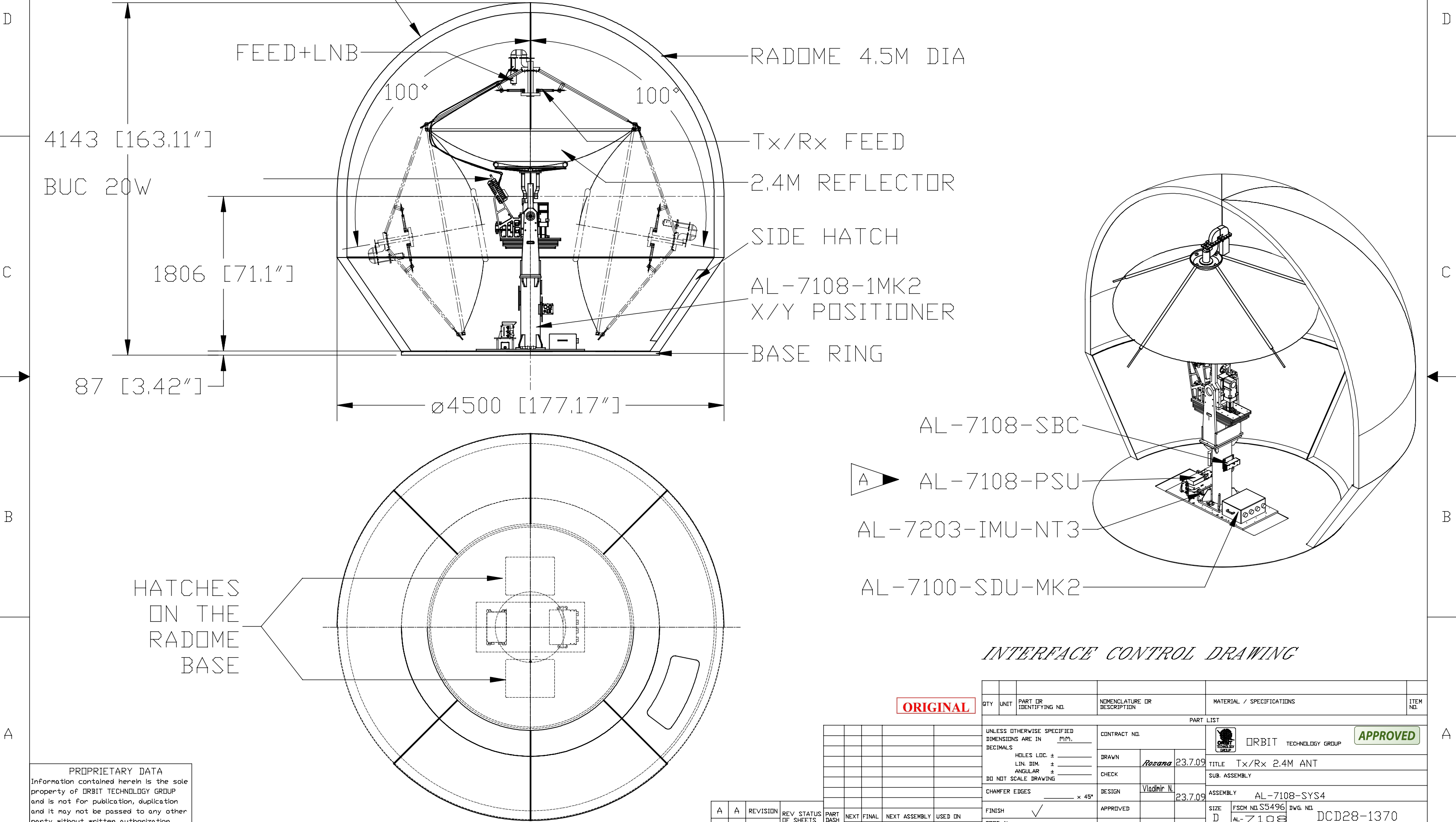


*Tx/Rx C-BAND CIRCULAR 2.4M ANTENNA SYSTEM
AL-7108-SYSTEM4*

REV. 1		DATE	APPROVED
DESCRIPTION		DATE	APPROVED
NEW RELEASE		1.6.10	Tolou F.
ECC. No. EC1000078			



- AL-7108-SBC
- AL-7108-PSU
- AL-7203-IMU-NT3
- AL-7100-SDU-MK2

INTERFACE CONTROL DRAWING

ORIGINAL

QTY	UNIT	PART OR IDENTIFYING NO.	NOMENCLATURE OR DESCRIPTION	MATERIAL / SPECIFICATIONS	ITEM NO.
PART LIST					
UNLESS OTHERWISE SPECIFIED DIMENSIONS ARE IN MM.			CONTRACT NO.		
DECIMALS			DRAWN <i>Rozana</i> 23.7.09		
HOLES LOC. ±			CHECK		
LIN. DIM. ±			DESIGN <i>Vladimir N.</i> 23.7.09		
ANGULAR ±			APPROVED		
DO NOT SCALE DRAWING			SIGN. DATE		
CHAMFER EDGES _____ x 45°			TITLE Tx/Rx 2.4M ANT		
FINISH ✓			SUB. ASSEMBLY		
PRG. No.			ASSEMBLY AL-7108-SYS4		
			SIZE FSCM NO. S5496 DWG. NO. DCD28-1370		
			SCALE 1/20 RELEASE DATE		
			SHEET 1 OF 2		

PROPRIETARY DATA
Information contained herein is the sole property of ORBIT TECHNOLOGY GROUP and is not for publication, duplication and it may not be passed to any other party without written authorization from ORBIT TECHNOLOGY GROUP

A	REVISION	REV STATUS	PART DASH NO.	NEXT QTY. REQD. PER ASSY.	FINAL QTY. REQD. PER ASSY.	NEXT ASSEMBLY APPLICATION	USED ON
2	1	SHEET					

Tx/Rx C-BAND 2.4M CIRCULAR ANTENNA SYSTEM AL-7108-SYSTEMA

SHEET	REV.	REVISED	DATE	APPROVED
REVISIONS				
ZONE	REV.	DESCRIPTION	DATE	APPROVED
		NEW RELEASE		
A		ECD. No. EC1000078	1.6.10	Talon F.

INSTALLATION PATTERN

OPTION 1

SIDE CLAMPING-12 MOUNTING HOLES „H” 18mm DIA PERFORMED IN THE EXTERNAL BRACKETS ARE ALLOWING SYSTEM EXTERNAL BOLTING FROM ABOVE TO IT'S SUPPORT BY MEANS OF SCREWS 5/8" OR M16 AND MATCHING WASHERS

CENTRAL CLAMPING-THREADED HOLES "A" 5/8-11UNC PERFORMED IN THE BASE RING ARE ALLOWING INSIDE RING BOLTING FROM BELLOW BY MEANS OF 5/8-11UNC SCREWS AND MATCHING WASHERS

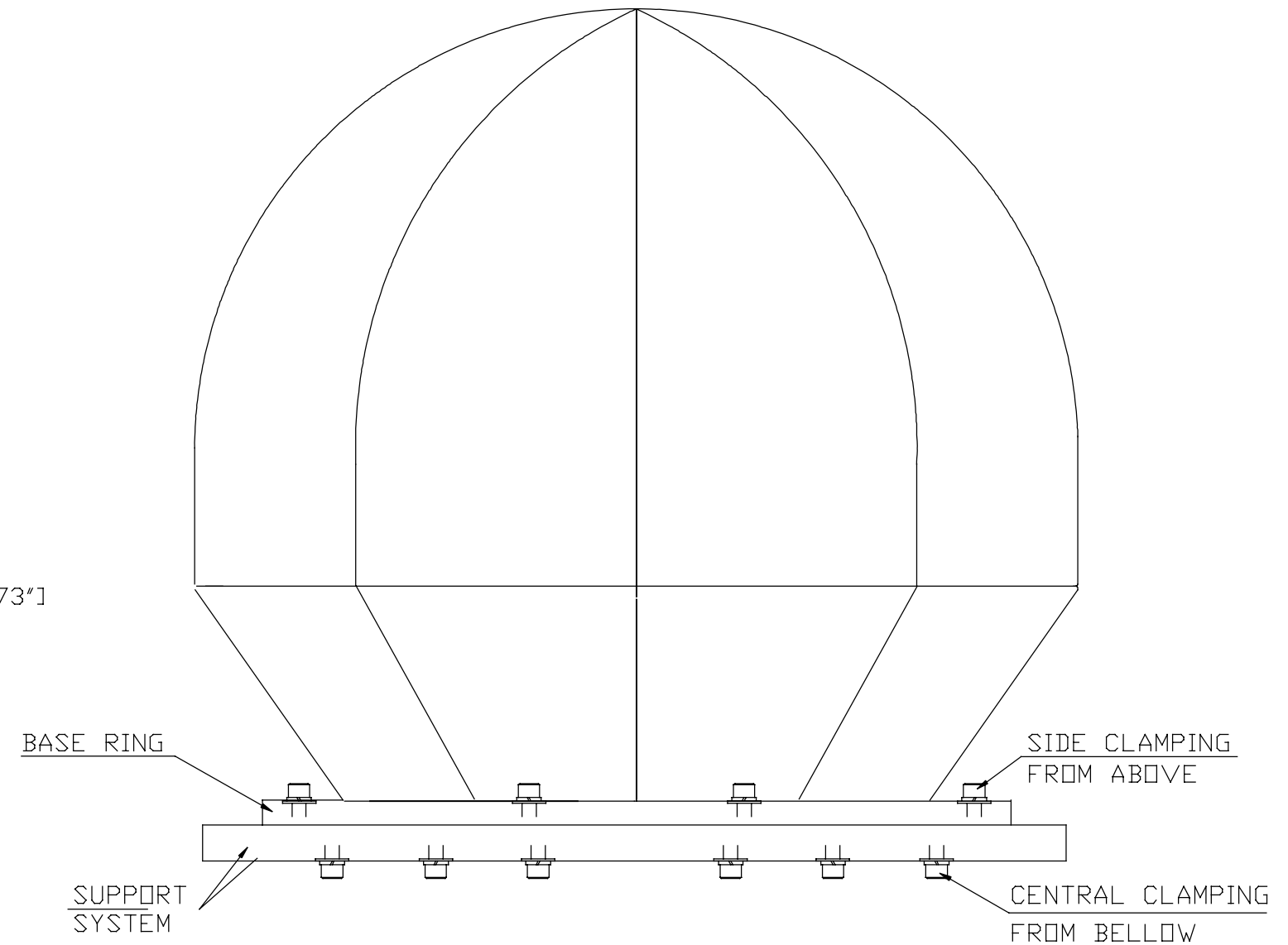
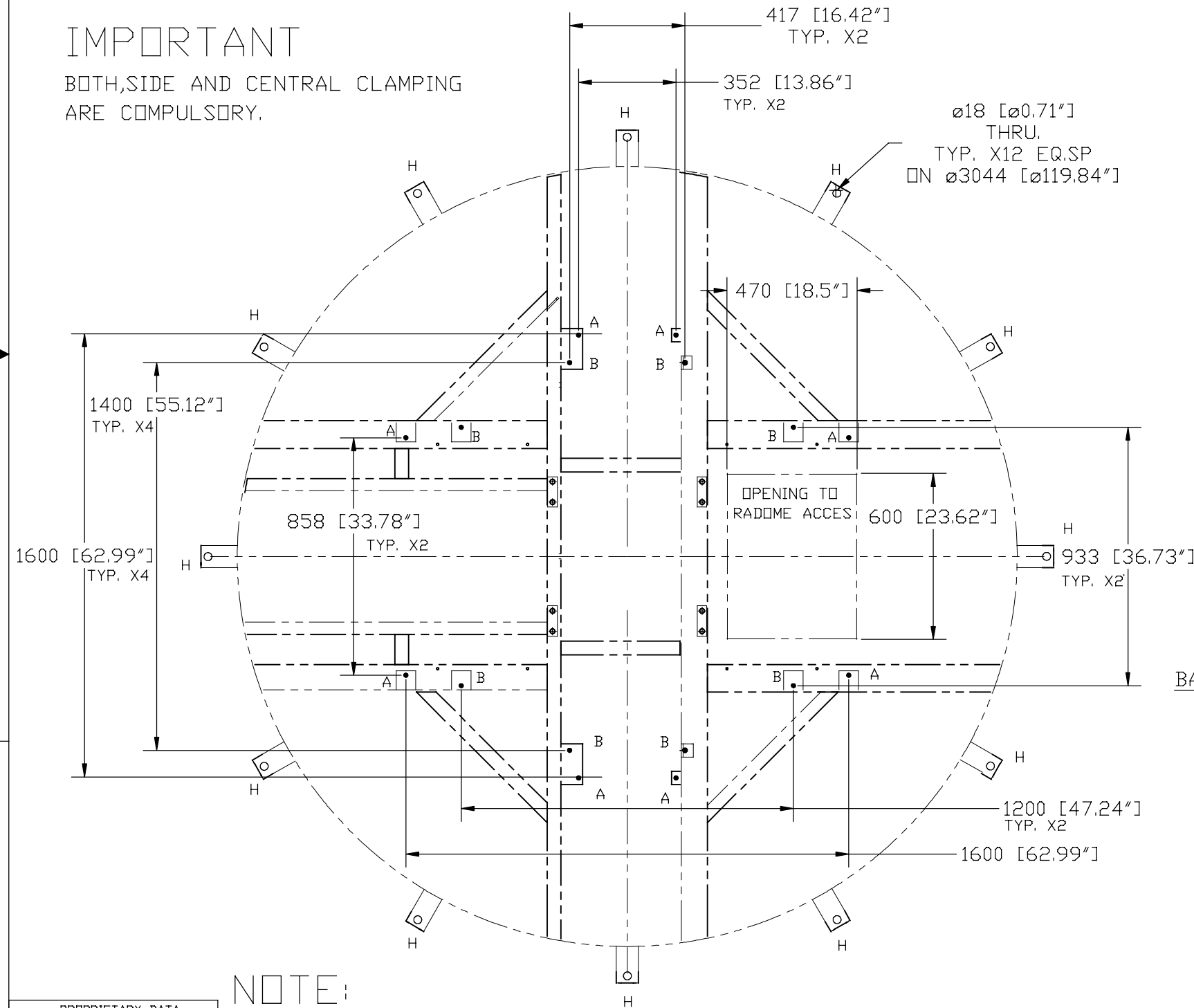
OPTION 2

SIDE CLAMPING-12 MOUNTING HOLES „H” 18mm DIA PERFORMED IN THE EXTERNAL BRACKETS ARE ALLOWING SYSTEM EXTERNAL BOLTING FROM ABOVE TO IT'S SUPPORT BY MEANS OF SCREWS 5/8" OR M16 AND MATCHING WASHERS

CENTRAL CLAMPING-THREADED HOLES "B" 5/8-11UNC PERFORMED IN THE BASE RING ARE ALLOWING INSIDE RING BOLTING FROM BELLOW BY MEANS OF 5/8-11UNC SCREWS AND MATCHING WASHERS

IMPORTANT

BOTH, SIDE AND CENTRAL CLAMPING ARE COMPULSORY.



NOTE:

BASE RING HAS TO BE SUPPORTED FROM BELLOW
BOTH IN PERIPHERIAL AND CENTRAL AREA

PROPRIETARY DATA
Information contained herein is the sole property of ORBIT TECHNOLOGY GROUP and is not for publication, duplication and it may not be passed to any other party without written authorization from ORBIT TECHNOLOGY GROUP

	ORBIT TECHNOLOGY GROUP	TITLE Tx/Rx 2.4 ANT	REV.
DRAWN <i>Rozana</i> 23.7.09	FSM NO. S5496	DWG. NO. DCD28-1370	
CHECK	SCALE 1/10	RELEASE DATE	SHEET 2 2