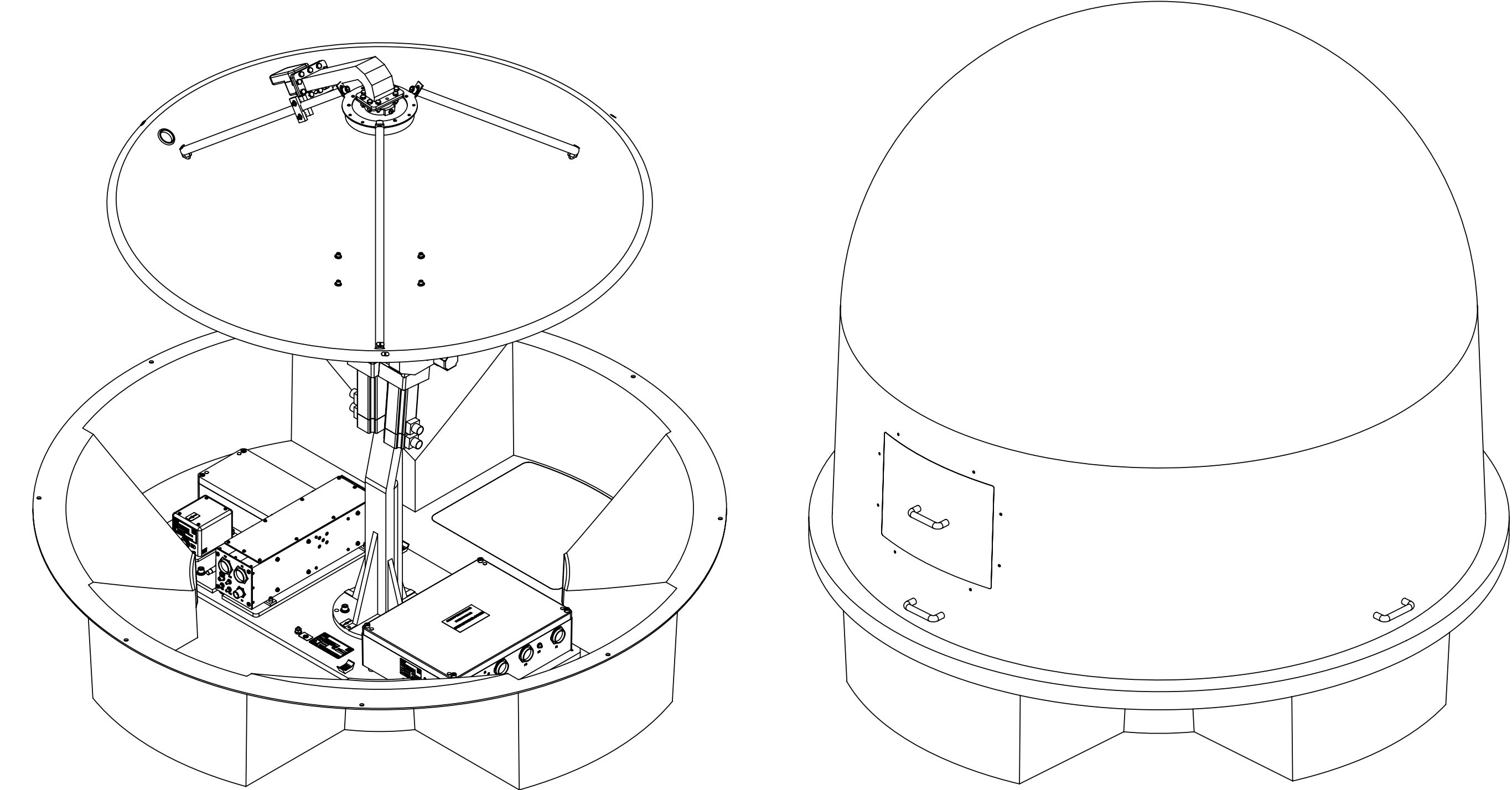
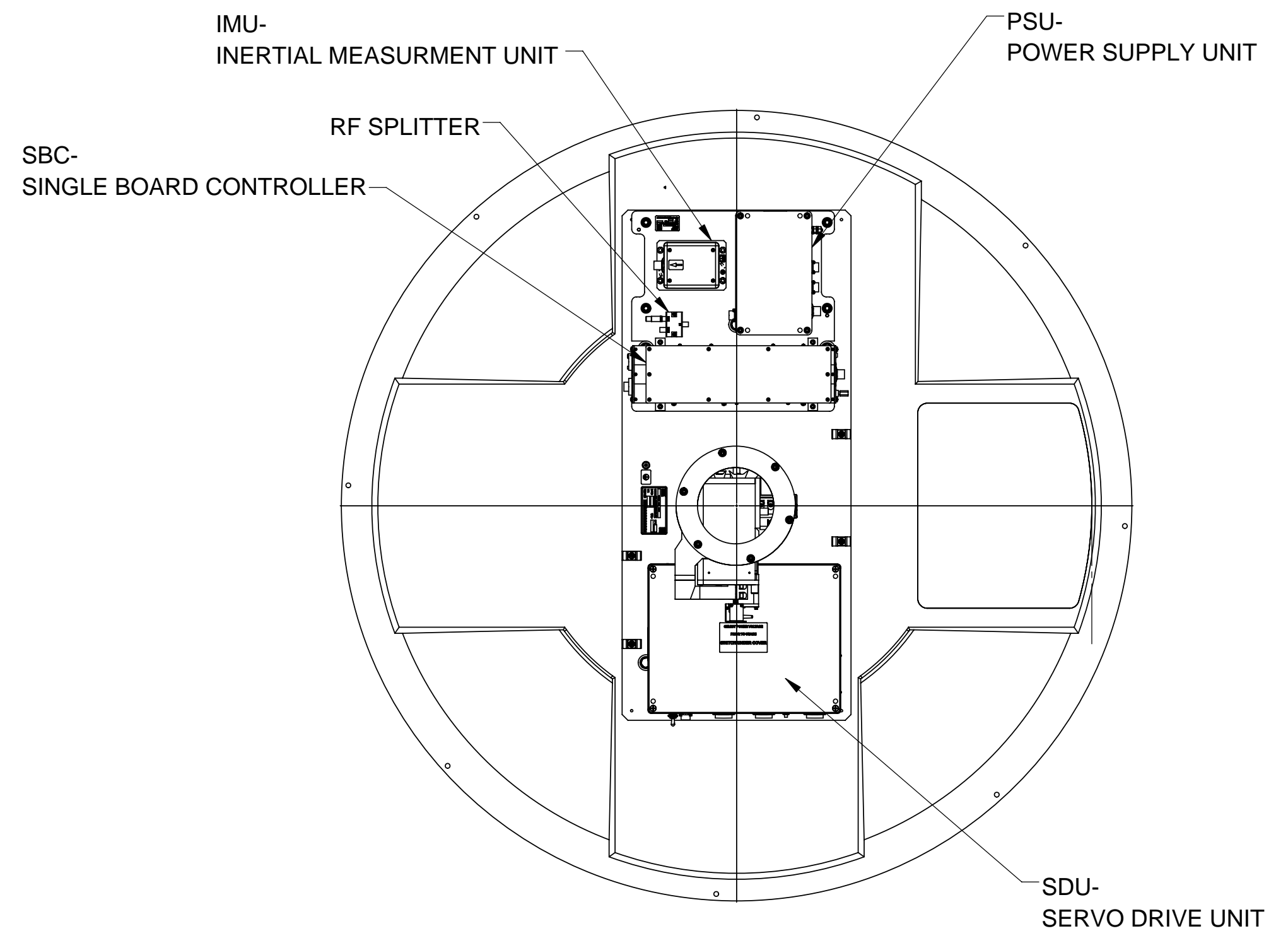
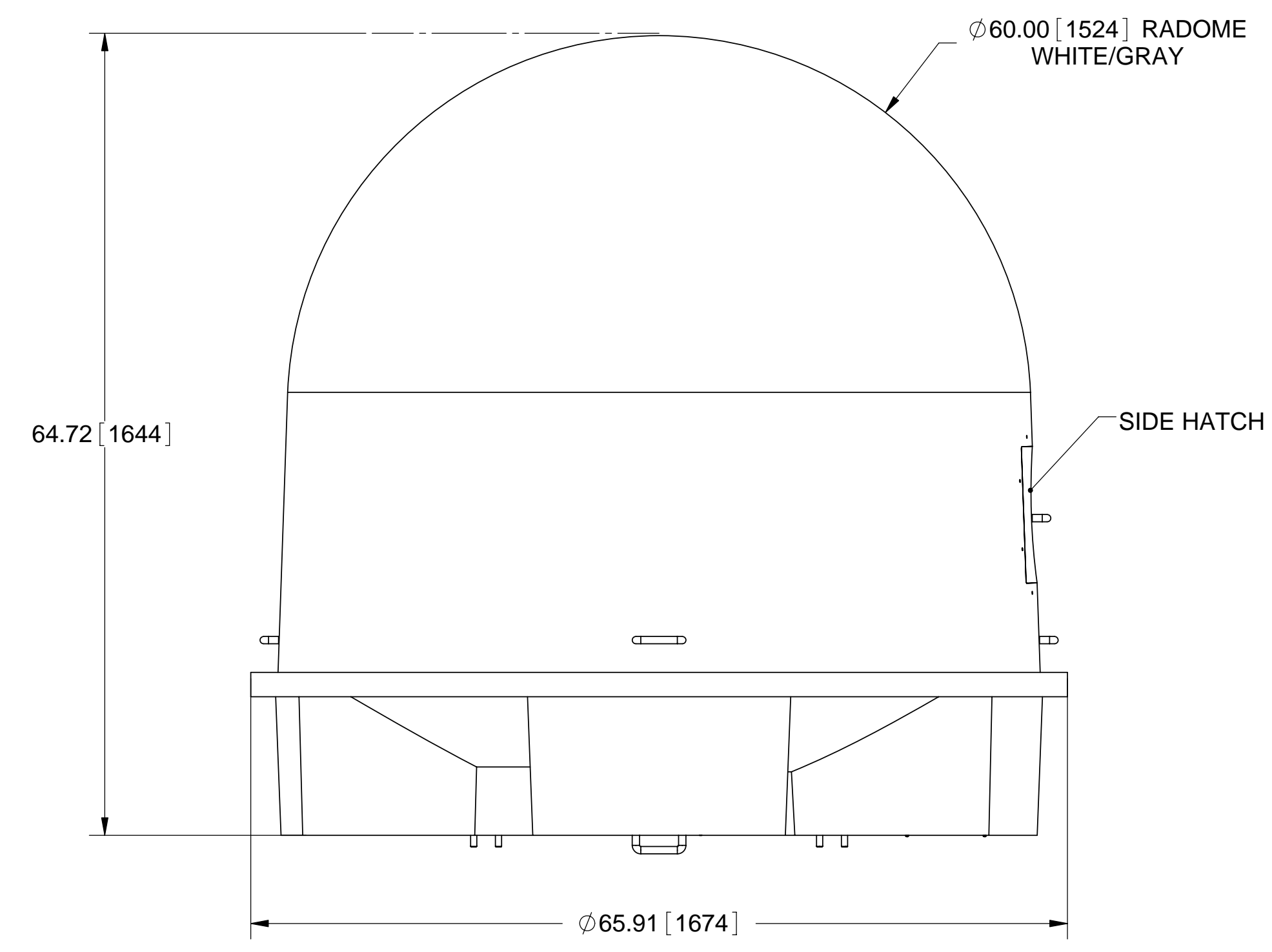
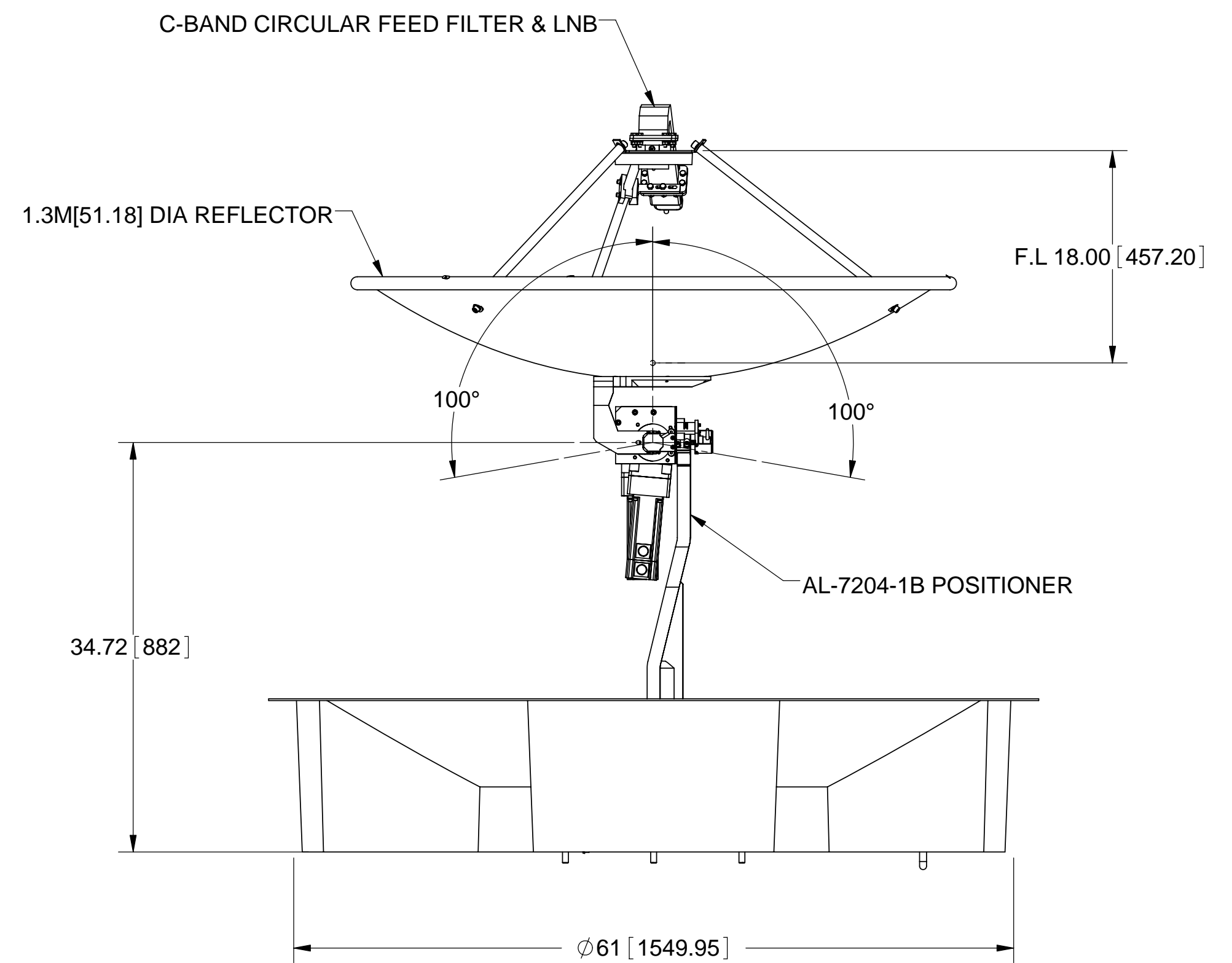


AL-7204 TVRO 1.3M ANT. F/O SYSTEM

SHEET	REV.	DWG. NO.	AL-	1
REVISIONS				
ZONE	REV.	DESCRIPTION	DATE	APPROVED
-	-	NEW RELEASE	21.3.07	



INTERFACE CONTROL DRAWING

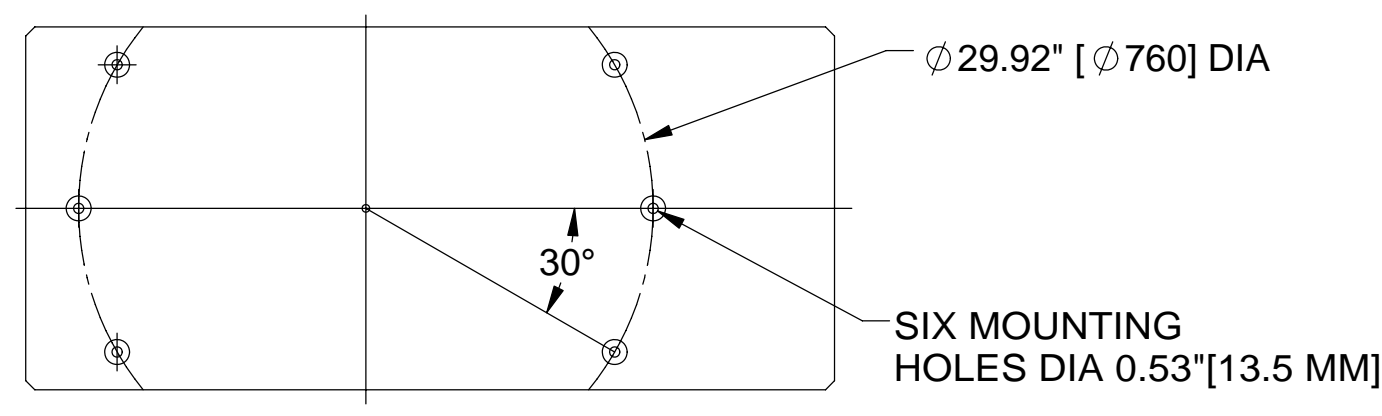
PROPRIETARY DATA
Information contained herein is the sole property of ORBIT Communication Ltd. and is not for publication, duplication and it may not be passed to any other party without written authorization from ORBIT Technology Group

UNLESS OTHERWISE SPECIFIED DIMENSIONS ARE IN mm[inch]										CONTRACT NO.		ORIGINAL	
DECIMALS										DRAWN <i>Aliza</i> 21.3.07		TITLE TVRO SYS 1.3M ANT. F/O	
HOLES LOC. =										CHECK		SUB. ASSEMBLY	
LIN. DIM. =										DESIGN OFRA 21.3.07		ASSEMBLY AL-7204-SYS-F	
ANGULAR =										APPROVED		SIZE D FSCM NO. S5496 DWG. NO. DCD27-0001	
DO NOT SCALE DRAWING										PROG. No.		SCALE 1:10 RELEASE DATE	
CHAMFER EDGES x 45°										WEIGHT 85kg SIGN.		Sheet1 OF 2	
FINISH ✓										DATE			
PART DASH NO.													
NEXT FINAL													
QTY. REQ. PER ASSY.													
NEXT ASSEMBLY USED ON													
APPLICATION													
2	1	REVISION SHEET	REV STATUS OF SHEETS	PART DASH NO.	NEXT QTY. REQ. PER ASSY.	FINAL	NEXT ASSEMBLY	USED ON	APPLICATION				

SHEET	REV.	DWG. NO.	AL-	1
TITLE				
REVISIONS				
ZONE	REV.	DESCRIPTION	DATE	APPROVED
-	-	NEW RELEASE	21.3.07	

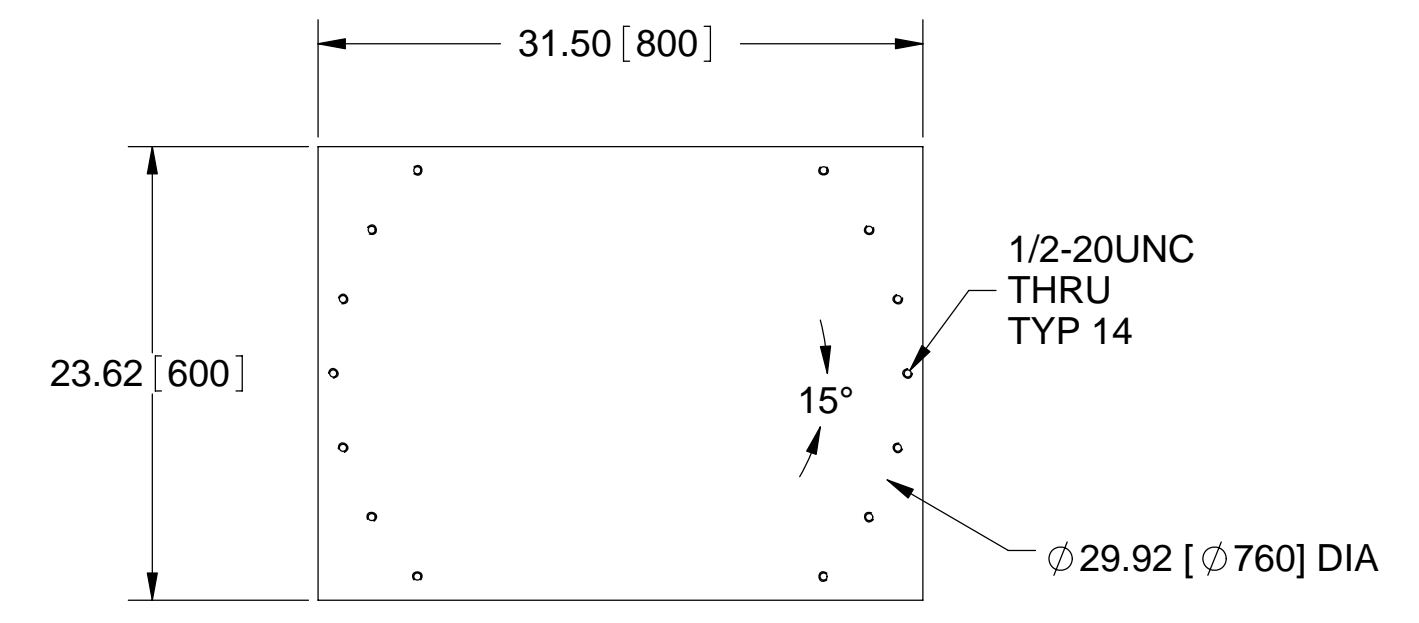
AL-7204-TVRO 1.3M ANT F/O SYSTEM

ANTENNA SYSTEM'S MOUNTING BASE PLATE (ON THIS PLATE IS MOUNTED THE PEDESTAL)



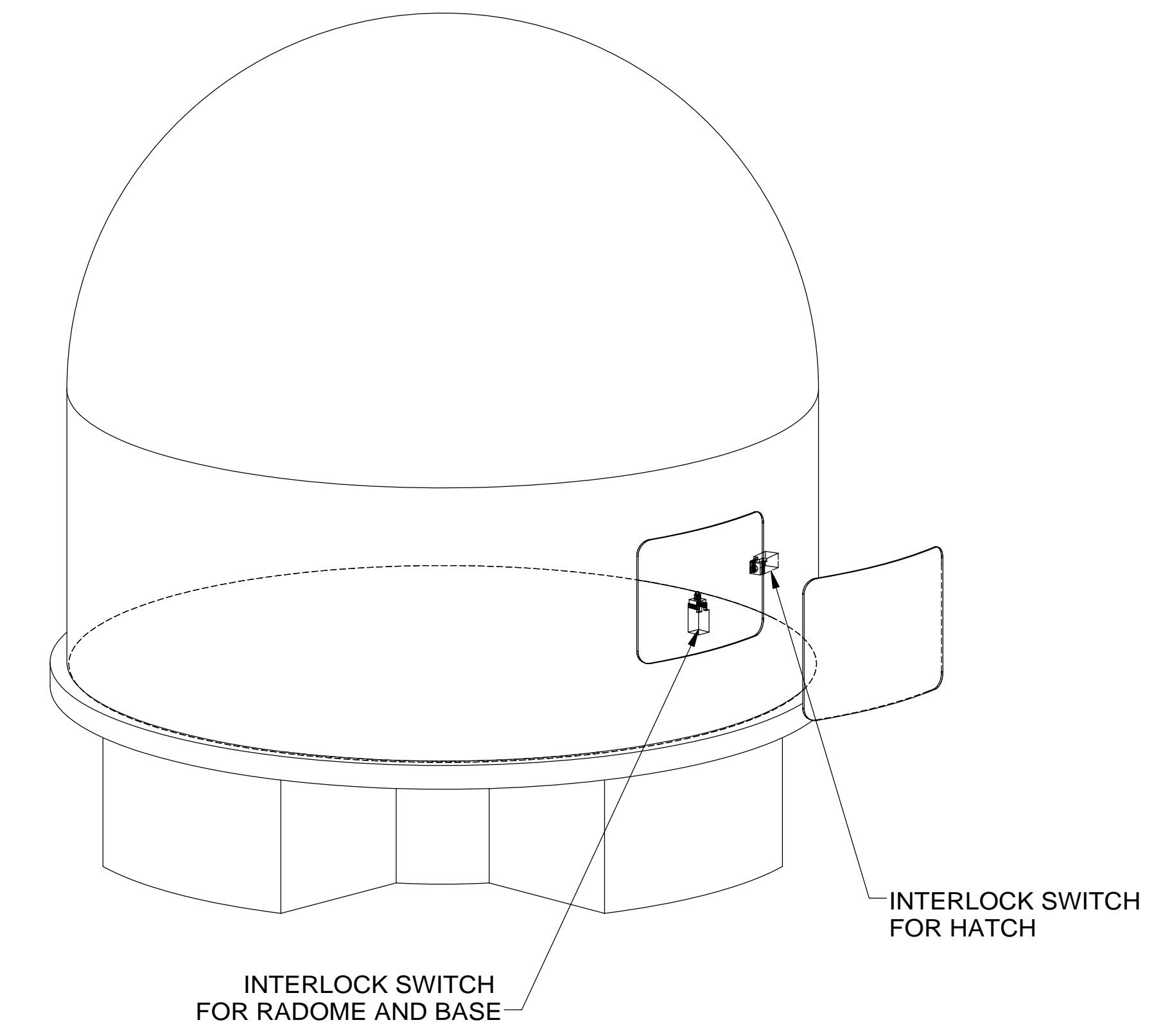
THERE ARE SIX MOUNTING HOLES VERSUS THE 14 THREADED HOLES RECOMMENDED ON THE FOUNDATION. THE PURPOSE IS TO ENABLE ANTENNA SYSTEM ACCOMMODATION ON DIFFERENT ANGLES.

RECOMMENDED FOUNDATION INTERFACE



1. FOR SYSTEM CLAMPING WILL BE USED ONLY 6 THREADS 1/2", ACCORDING TO POSITIONER'S BASE PLATE THE LARGER NUMBER OF THREADS ARE FOR FLEXIBILITY IN THE MOUNTING LOCATION.
2. THE RECOMMENDED INTERFACE PLATE TO BE MANUFACTURED BY MILD STEEL, WITH GOOD WELDING CAPABILITY AND A EFFICIENT ROAST PROOF COATING. MINIMUM THICKNESS RECOMMENDED IS 5/8" [16MM]
3. THE INTERFACE PLATE CAN BE WELDED OR BOLTED TO THE VESSEL OR TO A SPECIAL DESIGNATED CONSTRUCTION IF BOLTED THE MINIMUM WILL BE 6 BOLTS 1/2" IF WELDED, WELDING WILL BE CONTINUOUS, MINIMUM HEIGHT 0.7 OF THE PLATE THICKNESS

RECOMMENDED BASE POLE CONSTRUCTION ACCORDING TO ORBIT DRAWING NO. DWG20-0482



PROPRIETARY DATA
Information contained herein is the sole property of ORBIT Technology Group and is not for publication, duplication and it may not be passed to any other party without written authorization from ORBIT Technology Group

		TITLE TVRO SYS 1.3M ANT F/O		
DRAWN	Aliza	21.3.07	D	REV.
CHECK			FSCM NO. S5496	DWG. NO. DCD27-0001
SCALE 1:10		RELEASE DATE	Sheet2 OF 2	